

MEDIN WOODPEX III

APEXLOCATOR

Apexlocator MEDIN Woodpex III

- The basic parameter for successful endodontic treatment is correct and precise work-length determination, guaranteed by the MEDIN Woodpex III apexlocator.
- The new MEDIN Woodpex III apexlocator assures the accuracy of finding the apical foramen and determining the length of the root canal to an accuracy of 98%.
- We offer the third generation of the measuring device. Its high quality gives us a possibility to provide 36 months warranty.
- The functionality of the apexlocator is verified and guaranteed by leading endodontists.

Properties:

98% accuracy
Calibration and check of the correct function of the device
DEMO function
4.5" colour display
Sound signalling
User-friendly design

Parameters:

Power supply: 3.7 V / 750 mAh
Battery: Li-Ion 3.7 V / 750 mAh
Wavelength: 420-480 nm
Weight: 336 g
Dimensions: 84 x 88 x 112 mm

Advantages:

Spare parts for continuous use of the device are included in the package. It is also possible to use the device when sterilizing contact parts. Extended warranty for 3 years from purchase of the device.

References

MEDIN Woodpex III

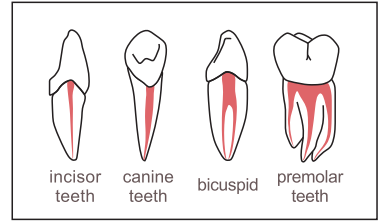
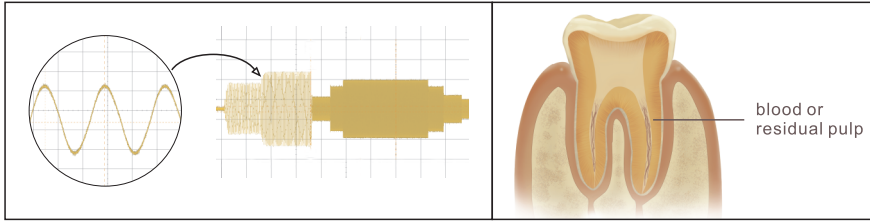
"The device itself is modern in appearance, a traditional stand construction with a sturdy base and a possibility to recline body with a display. It is ergonomically designed whether in a standing position on the desk or in the assistant's hand. It is also possible to use the device when sterilizing contact parts. The basic package corresponds to the current requirements of an infection control within the normal operation. No need to buy hooks and clips, everything is inside. The operating itself is a non-conflicting, intuitive, design is user-friendly. Overall, this device made an impression on me, despite of my spoilage by "apples."

MUDr. Daniel Černý
DLC Dent s.r.o.

FEATURE

1. Multi-frequency apical position technology, able to measure accurately when blood or residual pulp in root canal.

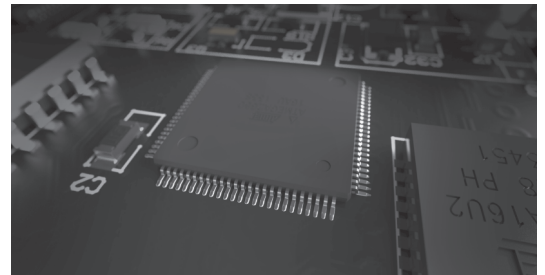
2. Measurement results will not be affected by the tooth type.



Clinical data matching,
The accuracy rate has been improved to

97.71%

Upgraded chip, real-time response, the sensitivity has been improved double
Innovative algorithm, multi-frequency measurement, and anti-interference.



THE ACCURACY CONTRAST AMONG WOODPECKER, AMERICAN BRAND D AND JAPANESE BRAND S

Method: Prepare 97 teeth of pulpitis and apical paradentitis, total 175 root canals. After finishing the initial root canal preparation, use the Apex Locators of Woodpecker, American brand D and Japanese brand S separately to measure the length of root canals, and combine the X-Ray film to test, finally compare the accuracy of the three types of Apex Locators.

Group	QTY of tested root canal	QTY of accurate results	Accuracy Rate
Woodpecker	175	171	97.71%
American brand D	175	171	97.71%
Janpanese brand S	175	171	97.71%

Cited Reference: Gu Yuan Ping
In vivo accuracy of three electronic root canal length measurement devices: Dentaport ZX, Woodpex III and ProPex II

The defect of traditional measurement method

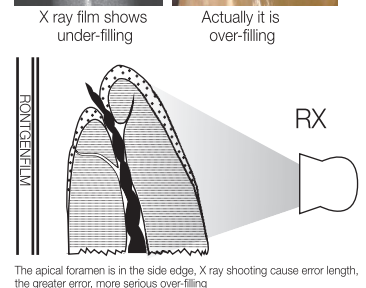
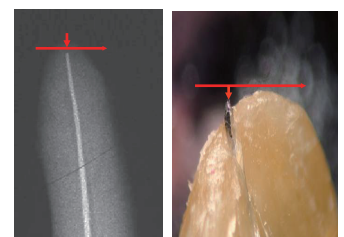
Disadvantage of handing method

Based on hand feeling and patient's pain, dentists decide whether the measuring tool reaches apical foramen, with high subjectivity and low accuracy. Foreign literature suggest that providing the range of error ± 0.5 mm, accuracy of handing method is only 42%.

Disadvantage of X ray film

3D structure shooting at 2D plana, because of different angles, easily getting wrong data.

Apical foramen can't be shown in the X ray film, for over 80% apical foramens are in the side edge instead of apex.





MEDIN, a.s.

Vlachovická 619

592 31 Nové Město na Moravě

Czech Republic

IČ: 43378030

DIČ: CZ43378030

+420 566 684 373

export@medin.cz

www.medin.eu

Distributed by: